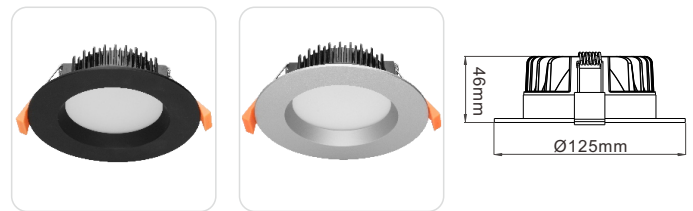


## Features

- ✓ **Heat sink design** better for air convection, good heat dissipation. Set up color temperature by switch on and off, Tri-color.
- ✓ **SMD LED/OSRAM LED**, up to 70 lm/W, CRI 90+.
- ✓ **Dimming capability**. Suits triac dimmers including OPUS, Clipsal, HPM, Niko, Lumeo Domus, Lumeo Eco. The driver with SAA, RCM and CE certification.

## Specifications

Model	LS-DL13RW-A
Voltage	AC200-240V 50Hz/60Hz
Power	13W
LED	SMD LED/OSRAM LED
CCT	2700K/630nm
Luminous Flux	750-850lm
Efficiency	70 lm/W
PF value	>0.9
CRI	90+
Beam Angle	90°
Dimmable	Yes, leading edge, trailing edge and universal
IP Rated	IP44
Lifespan	>40,000Hrs
Cut-out	Ø90-120mm
Dimension	Ø125*H46mm
Inner Box	L138*W138*H90mm
Carton	L57.5*W43*H29.5CM, 36pcs/CTN
Warranty	3 years on driver, 5 years on downlight
Finish	White



**2700K 90+CRI**  
Warm White  
(High Colours)

**2700K +630nm Red**  
Relaxing  
(low blue light)

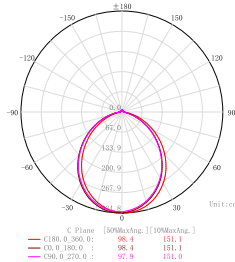
**630nm Red**  
Healing & Sleep  
(Zero blue)



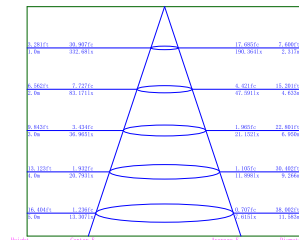
## Technical Data Test

90D-2700K

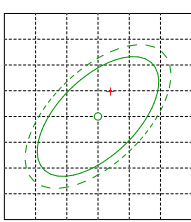
### G01900L GONIOPHOTOMETER Test Report



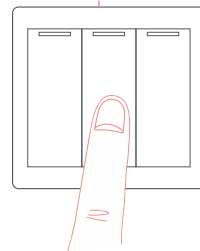
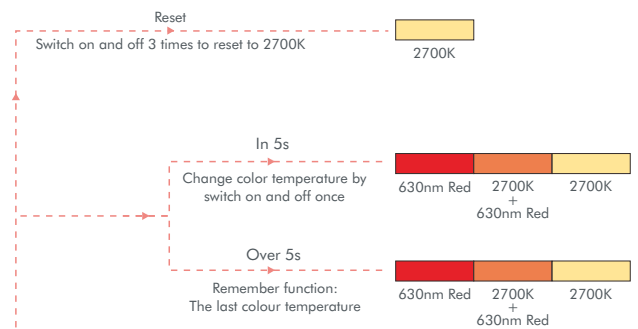
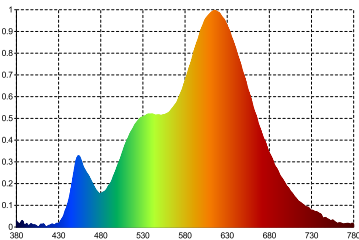
### Average Illuminance Figure



### Light Source Test Report



SDCM: : 2.1 SDCM



Switch on and off